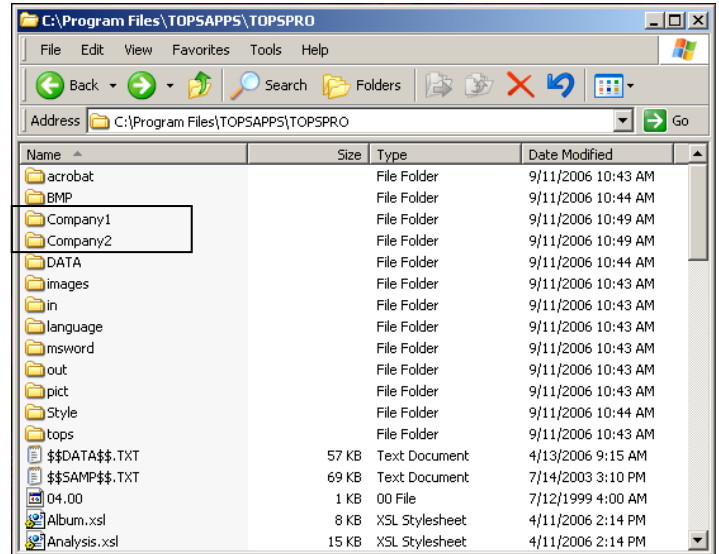


TOPS – Multiple Database Setup

1. Install TOPS Pro as instructed.
2. Go to the C:\Program Files\TOPSAPPS\TOPSPRO directory and make a copy of the “data” folder.
3. Rename the copy: For our example we made 2 copies and named them Company1 and Company2.
4. Now make 2 shortcuts of the topspro.exe on the desktop. Rename the shortcuts to Company1 and Company2.



5. Right click on the first shortcut and click “Properties”.
6. In the target path (highlighted on right) after ...topspro\topspro.exe” add a space, then enter
-dbpath= <path> (in our case) C:\Program Files\TOPSAPPS\TOPSPRO\Company1

The whole target line will look something like this:
"C:\Program Files\TOPSAPPS\TOPSPRO\topspro.exe" -dbpath="C:\Program Files\TOPSAPPS\TOPSPRO\Company1

7. Click “OK” - When you run this executable from now on, it will point to the database specified.
8. Repeat steps 5-7 to the Company2 shortcut.

