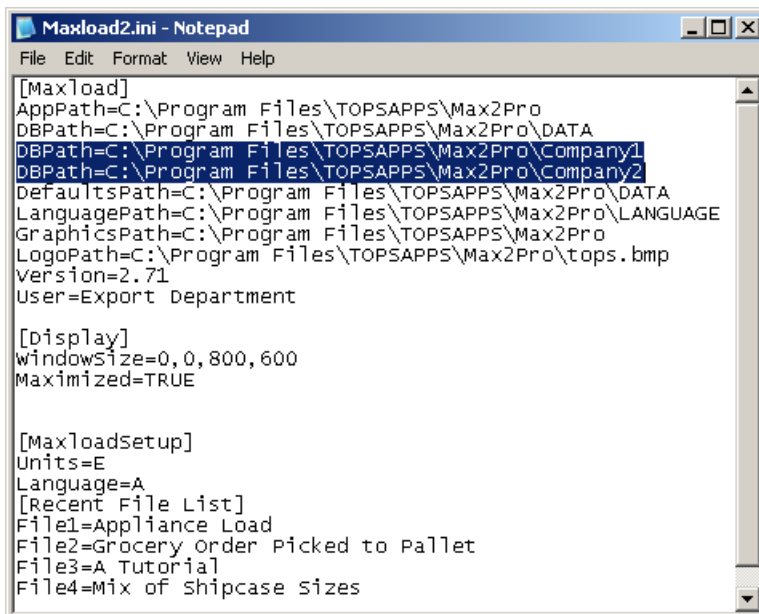


# MaxLoad Pro – Using Multiple Databases

MaxLoad Pro saves all data within the program in a Microsoft Access database file in the ...\\TOPSAPPS\\Max2Pro\\Data\\ folder. However, you are not limited to just one database when using MaxLoad. Sometimes, it makes sense to create separate database, for example, to hold data for different customers or departments.

Follow these steps to add two (2) database within MaxLoad Pro:


1. Install MaxLoad Pro.
2. Open Windows Explorer and go to the C:\\Program Files\\TOPSAPPS\\Max2Pro\\ folder.
3. Make two copies of the “Data” folder. (Please consult your Windows manual or your IT department on how to create copies of folders or files.)
4. Rename the “Copy of Data” folder to “Company1” (or any name of your choice).
5. Rename the “Copy (2) of Data” folder to “Company2” (or any name of your choice).
6. Open **Maxload2.ini** (in the C:\\Program Files\\TOPSAPPS\\Max2Pro\\ folder) in notepad and add two new “DBPATH=” statements as highlighted in the dialog box below. Click File | Save and close the file.



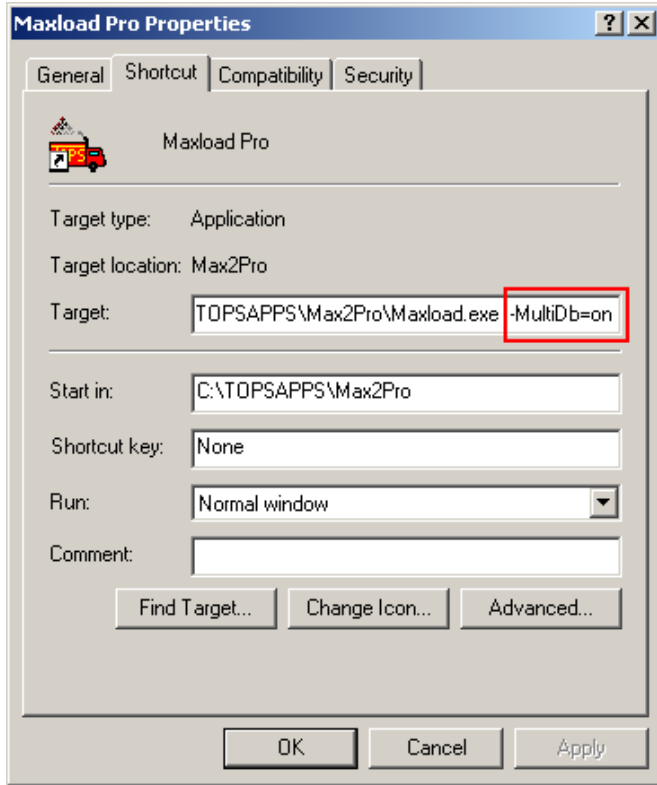
```
Maxload2.ini - Notepad
File Edit Format View Help
[Maxload]
AppPath=C:\\Program Files\\TOPSAPPS\\Max2Pro
DBPath=C:\\Program Files\\TOPSAPPS\\Max2Pro\\DATA
DBPath=C:\\Program Files\\TOPSAPPS\\Max2Pro\\Company1
DBPath=C:\\Program Files\\TOPSAPPS\\Max2Pro\\Company2
DefaultsPath=C:\\Program Files\\TOPSAPPS\\Max2Pro\\DATA
LanguagePath=C:\\Program Files\\TOPSAPPS\\Max2Pro\\LANGUAGE
GraphicsPath=C:\\Program Files\\TOPSAPPS\\Max2Pro
LogoPath=C:\\Program Files\\TOPSAPPS\\Max2Pro\\tops.bmp
Version=2.71
User=Export Department

[Display]
windowSize=0,0,800,600
Maximized=TRUE

[Maxloadsetup]
Units=E
Language=A
[Recent File List]
File1=Appliance Load
File2=Grocery Order Picked to Pallet
File3=A Tutorial
File4=Mix of shipcase sizes
```

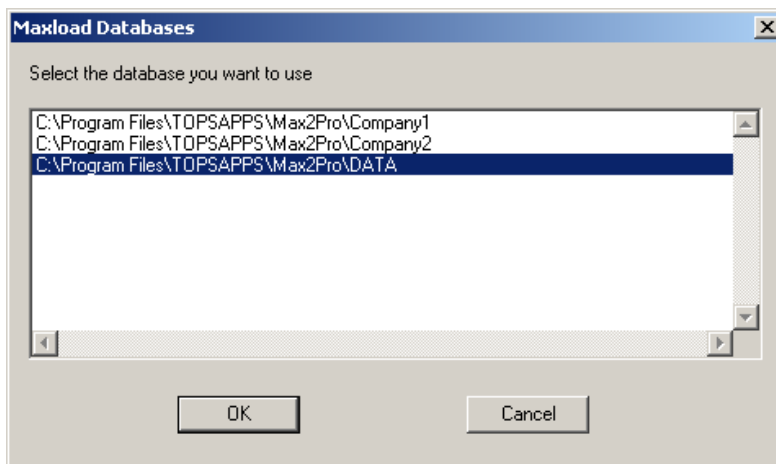
7. If you have a MaxLoad shortcut on the desktop, right click on the shortcut  and select “Properties”.
8. In the MaxLoad Properties dialog box as shown below, go to the Target field and add the following “-MultiDb=on” switch like ...\\TOPSAPPS\\Max2Pro\\Maxload.exe -MultiDb=on”. This switch

enables the multiple database function within MaxLoad.



9. Click on OK to save the MaxLoad Properties.

10. Run MaxLoad Pro by using the MaxLoad shortcut that you've just edited. You will see a screen similar to the following. Select the database you'd like to use and click on OK.



11. Login and now you should be working with the specific data saved in the selected database.