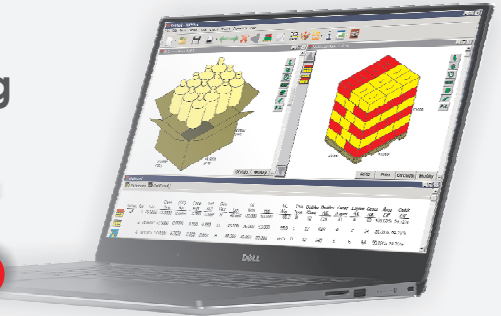


TOPS® Pro is a versatile software that allows users to determine the most optimal package design, arrangement and pallet configuration based on product dimensions and packaging requirements. It is used to:

- ❖ Size product and intermediate pack
- ❖ Optimize shipcase size & configuration
- ❖ Improve pallet efficiency
- ❖ Load trailer and container
- ❖ Calculate stacking strength

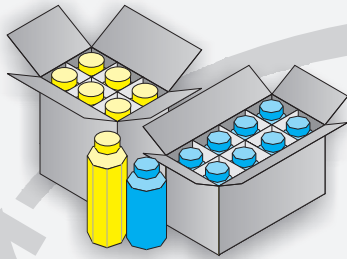
### TOPS® Pro Software Reduces Packaging and Freight Costs

# 8-15%



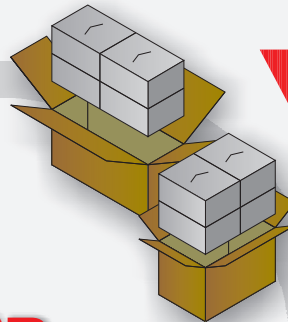
#### Optimize Product Size and Arrangement

Determine the best size and arrangement to package a product.



#### Evaluate Shipcase Sizes

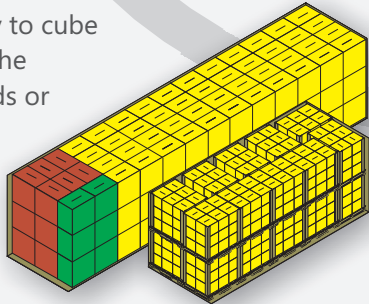
Find the optimal size for the shipcase or master carton to maximize product quantity while reducing corrugated usage.



## TOPS® Pro

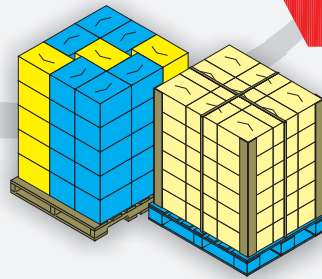
#### Cube Out Trucks and Containers

Calculate the best way to cube out the vehicles with the products as pallet loads or floor loads.



#### Maximize Pallet Efficiency

Improve pallet utilization by increasing the number of shipcases on pallets. Enhance load stability with stacking analysis and selection of optimal board grades.



#### Some of TOPS® Pro Customers

TOPS® has been offering package design and palletization software since the 1980's. We currently have over 8,000 installations worldwide. Below are some of our TOPS® Pro customers.

##### Corrugate & Packaging

International Paper, Green Bay Packaging, Georgia Pacific, Veritiv, Norampac, Kapstone, Grupo Gondi, Pratt Industries, VISY Board, Pactiv

##### FMCG

Proctor & Gamble, General Mills, PepsiCo, Reckitt Benckiser, Johnson & Johnson, Keurig, Kimberly-Clark, Kellogg, Campbell Soup, SCA, Colgate Palmolive, Hanesbrands

##### Other

Hewlett Packard, Mattel, Chep, Pfizer, Logitech, Costco, Newell Rubbermaid, Becton Dickinson, Coleman, 3M, Estee Lauder



## TOPS®Pro Special Functions

### Create A Shape Yourself (C.A.S.Y.)

The **C.A.S.Y.** module enables users to create realistic primary packs and product trays with paste-on graphics. Users can model solid symmetrical and asymmetrical shapes such as trigger-top bottles, pinch tubes, stand-up pouches and more.

### Create Mixed Trays and Mixed Load Pallets for Display

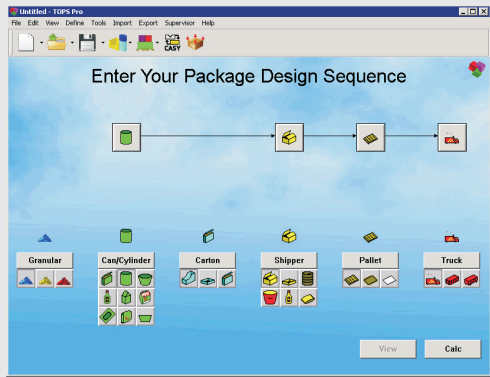
The **MixPro** module allows users to create mixed product trays and mixed product pallet loads. It features a 3D virtual stage where users can easily drag and drop products into a tray or shipcase and then onto pallet to create display items for club stores.

### Other Special Functions

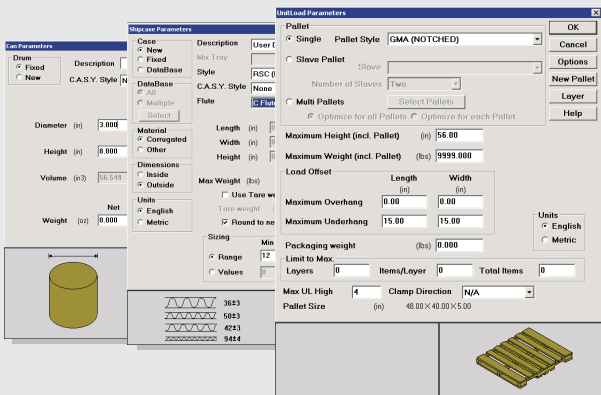
- ❖ Compression and Stacking Strength Analysis - To ensure savings in corrugated costs and minimize damage during transit and storage, TOPS®Pro uses the McKee formula along with mechanical and environmental factors to calculate stacking results based on Edge Crush, Ring Crush, or Kellicut results. Users can enter their own paper and board values as well as filter out values for quick reference.
- ❖ The knock down function quickly converts erected box dimensions into flat pack size to be bundled and shipped on pallets - a great tool for corrugate suppliers.
- ❖ Eco Savings Report (ESR) provides information on packaging and corrugated costs, wastage, pallet costs and carbon emissions data for comparison among different solutions.
- ❖ RFID location optimizer finds the best shipcase location for RFID tag placement to maximize readability.
- ❖ Share analyses by publishing reports over the network or to the internet.



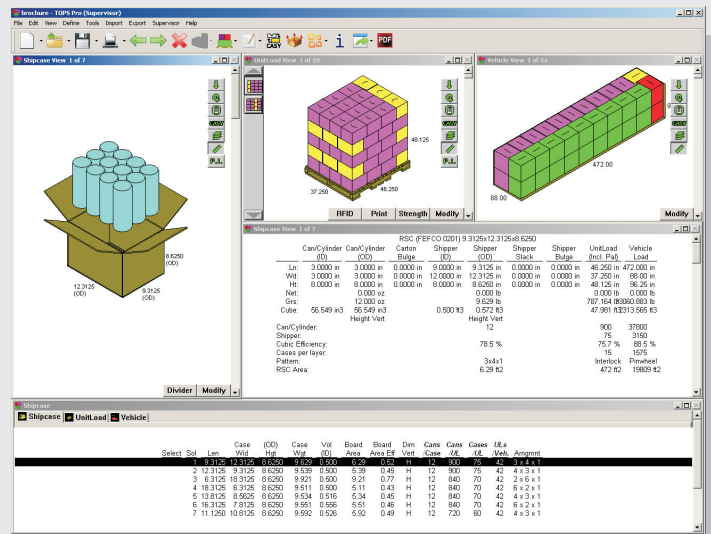
## The TOPS®Pro Design Sequence



**1 Control Panel:** Select stages to be added to the design sequence: primary product, intermediate pack, shipcase, pallet and vehicle.



**2 Define Parameters:** For each stage, enter the corresponding parameters including dimensions, weight, quantity; specify box style, flutes, use of dividers and more.

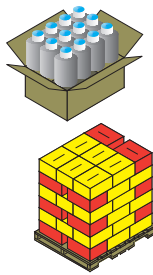


**3 View Solutions:** Each solution screen shows all statistics through the last design sequence. Quickly see how changing one parameters can affect all solutions downstream.

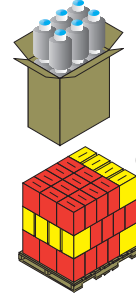
## How to Save Money with TOPS® Pro

### Optimize Shipcase Size

By picking an alternate shipcase for the primary pack, board area is cut down by 17.15% while retaining the same cubic efficiency.



RSC (FEFCO 0201) 16.3125x12.3125x7.6250		
Can/Cylinder (OD)	Shipper (ID)	Shipper (OD)
Ln: 4.0000 in	16.0000 in	16.3125 in
Wd: 4.0000 in	12.0000 in	12.3125 in
Ht: 7.0000 in	7.0000 in	7.6250 in
Net: 0.0000 oz		0.000 lb
Gr: 0.0000 oz		0.793 lb
Cube: 87.96 in <sup>3</sup>	0.7778 ft <sup>3</sup>	0.8863 ft <sup>3</sup>
Height Vertical		Height Vertical
Can/Cylinder:	12	
Area Efficiency:	78.54%	
Cubic Efficiency:	78.54%	
Pattern:	4x3x1	
RSC Area:	7.93 ft <sup>2</sup>	

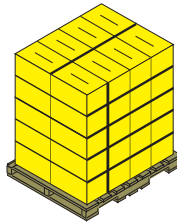


RSC (FEFCO 0201) 12.3125x8.3125x14.6250		
Can/Cylinder (OD)	Shipper (ID)	Shipper (OD)
Ln: 4.0000 in	12.0000 in	12.3125 in
Wd: 4.0000 in	8.0000 in	8.3125 in
Ht: 7.0000 in	14.0000 in	14.6250 in
Net: 0.0000 oz		0.000 lb
Gr: 0.0000 oz		0.657 lb
Cube: 87.96 in <sup>3</sup>	0.7778 ft <sup>3</sup>	0.8662 ft <sup>3</sup>
Height Vertical		Height Vertical
Can/Cylinder:	12	
Area Efficiency:	78.54%	
Cubic Efficiency:	78.54%	
Pattern:	3x2x2	
RSC Area:	6.57 ft <sup>2</sup>	

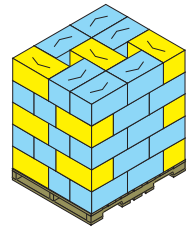
### Maximize Pallet Loads

Improvements made by using a different pallet pattern include:

- ❖ One more shipper per layer
- ❖ Five more shippers per pallet
- ❖ Area efficiency up by 10.45%
- ❖ Cubic efficiency up by 10.34%



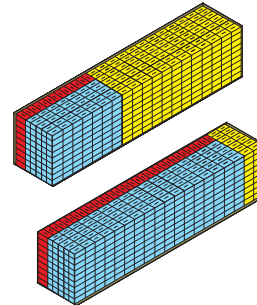
GMA (Notched) 48.000x40.000x5.000			
Shipper (ID)	Shipper (OD)	Unitload (Incl. Pal)	Unitload (Incl. Pal)
Ln: 17.9375 in	18.2500 in	44.000 in	47.500 in
Wd: 10.6875 in	11.0000 in	36.500 in	40.250 in
Ht: 9.0630 in	9.6880 in	53.440 in	53.440 in
Gr: 0.0000 oz	12.500 lb	565.000 lb	627.500 lb
Cube: 1.0055 ft <sup>3</sup>	1.1255 ft <sup>3</sup>	49.6670 ft <sup>3</sup>	59.1265 ft <sup>3</sup>
Height Vertical		40	45
Shipper:	0.00 %	83.65 %	94.10 %
Area Efficiency:	0.00 %	82.69 %	93.03 %
Cubic Efficiency:		8	9
Layers/load:		5	5
Pattern:		Column	Diagonal
RSC Area:	8.40 ft <sup>2</sup>	336 ft <sup>2</sup>	378 ft <sup>2</sup>



### Improve Container Cubic Efficiency

TOPS® Pro provides up to 50 different plans for straight loads. An optimal plan can load more shippers with the same resources.

476.00x98.00x110.00			
Shipper (ID)	Shipper (OD)	Vehicle Load	
Ln: 24.6875 in	25.0000 in	475.000 in	
Wd: 12.9375 in	13.2500 in	92.75 in	
Ht: 11.3750 in	12.0000 in	108.00 in	
Gr: 0.0000 oz	0.000 lb	0 lb	
Cube: 2.1025 ft <sup>3</sup>	2.3003 ft <sup>3</sup>	2753.52 ft <sup>3</sup>	
Height Vertical			
Shipper:	1179		
Area Efficiency:	0.00 %	93.02 %	
Cubic Efficiency:	0.00 %	91.33 %	
Cases per layer:	131		
Layers/load:	9		
Pattern:	Triblock		
RSC Area:	13.41 ft <sup>2</sup>	15815 ft <sup>2</sup>	
Density (gr/cc):	0.0000	0.0000	



476.00x98.00x110.00			
Shipper (ID)	Shipper (OD)	Vehicle Load	
Ln: 24.6875 in	25.0000 in	475.000 in	
Wd: 12.9375 in	13.2500 in	92.75 in	
Ht: 11.3750 in	12.0000 in	108.00 in	
Gr: 0.0000 oz	0.000 lb	0 lb	
Cube: 2.1025 ft <sup>3</sup>	2.3003 ft <sup>3</sup>	2753.52 ft <sup>3</sup>	
Height Vertical			
Shipper:	1188		
Area Efficiency:	0.00 %	93.73 %	
Cubic Efficiency:	0.00 %	92.03 %	
Cases per layer:	132		
Layers/load:	9		
Pattern:	Triblock		
RSC Area:	13.41 ft <sup>2</sup>	15936 ft <sup>2</sup>	
Density (gr/cc):	0.0000	0.0000	

### System Requirements

- Platform Client ..... Windows XP, Vista, Windows 7, 8 and 10
- Platform Server ..... Any (only require a network file share)
- Processor Client ..... X86 or x64 (1 GHz or higher)
- RAM Required ..... 1 GB or more recommended
- Hard Drive Space ..... 500 MB or more
- Video Required ..... 1024x768 or higher at 16-bit color or higher
- Database ..... Standard version: c-tree, no external DB required
  - MS SQL (include SQL Express)
  - Oracle (include Oracle Express)
- Citrix ..... Supported
- Terminal Server ..... Supported
- Direct X ..... 6.0 or above

### Annual Maintenance and Support Plan (MVP)

TOPS® has an expert team to provide outstanding technical support and customer service. The MVP plan includes:

- ❖ Unlimited assistance on technical and software usage questions
- ❖ Free software upgrades for the annual subscription
- ❖ Toll-free access (USA only) during TOPS® office hours
- ❖ Eight man-hours of software training: on-site\*, at TOPS office in Allen, Texas or web based
- ❖ Access to TOPS® flash-based software tutorial series
- ❖ Newsletters with the latest news and tips on how to get the most out of your software investment

\*Customer to pay for travel & living expenses for TOPS staff to train on-site



1301 Central Expy South, Suite 200  
Allen, Texas 75013 USA  
voice: 972-739-8677 fax: 972-739-9478  
www.topseng.com info@topseng.com

Call 972-739-8677 or visit our website  
to request a live web demo or free trial.

[www.topseng.com](http://www.topseng.com)